

SFI STANDARD'S CONTRIBUTION TO CONSERVATION OUTCOMES



**FORESTS OF
OPPORTUNITY**



SFI-0001



DARREN SLEEP

Senior Director, Conservation Strategies

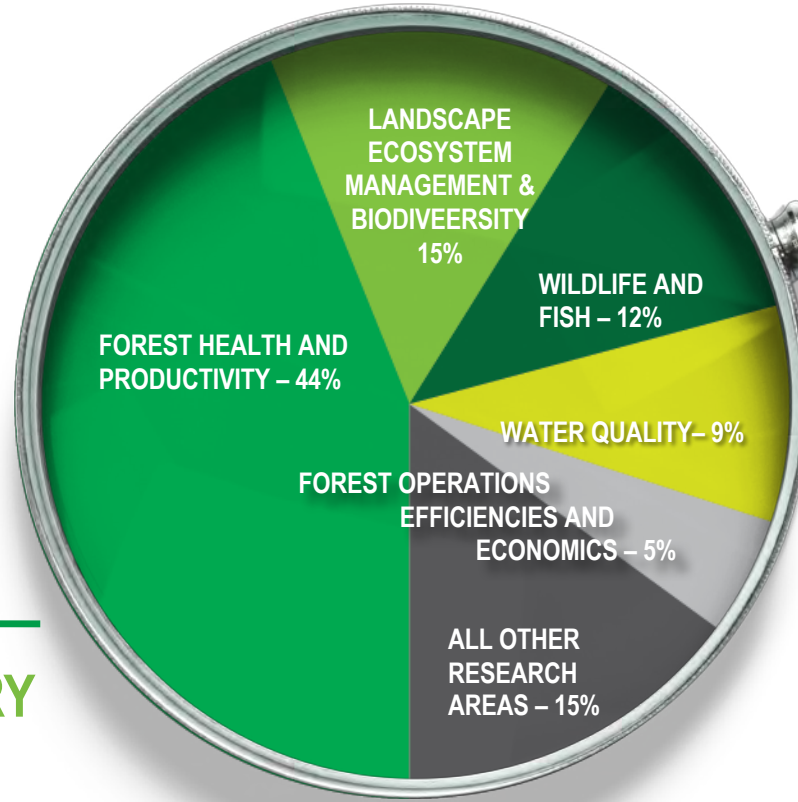
SFI Inc.



FORESTS OF OPPORTUNITY



SFI PROGRAM PARTICIPANTS INVEST IN RESEARCH



DISTRIBUTION OF SFI PROGRAM PARTICIPANT RESEARCH DOLLARS IN 2018

Since 1995, SFI Program Participants have directly invested nearly **\$1.7 billion** in forest research. In 2018, **about 80% of these investments were allocated to**

NO OTHER FORESTRY STANDARD HAS A RESEARCH REQUIREMENT

conservation-related



PROJECTS ON THE GROUND

In 2018, SFI Program Participants engaged with over 600 organizations in multiple sectors including research, conservation, government, academic, community and others.



OTHER INCLUDES:

Brand owners • Consultant Firms • Consultant Groups • Non-SFI landowners • Other SFI Program Participants • Associations

SFI CONSERVATION GRANTS

Fosters partnerships between organizations interested in improving forest management, understanding the role of SFI forests and SFI fiber sourcing in advancing conservation outcomes, and clarifying the connections between critical outcomes and responsible management and procurement.

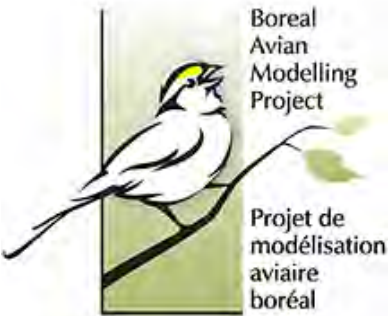
63

CONSERVATION
GRANTS

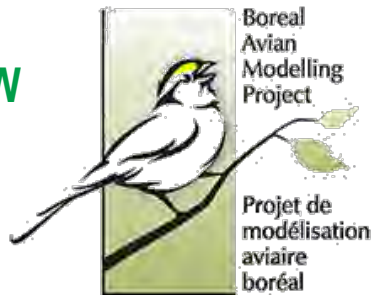


Since 2010, SFI has awarded 100+ SFI Conservation and Community Partnerships grants, totaling more than \$4.4 million, to foster conservation and community-building projects.

2019 SFI CONSERVATION GRANTS



BIRD CONSERVATION REACHES CONTINENTAL SCALE THROUGH NEW PARTNERSHIP WITH THE BOREAL AVIAN MODELLING PROJECT



Applying Data-Driven Measures to Evaluate and Improve the Conservation Value of Managed Forests for Birds

Project Partners: University of Alberta Department of Renewable Resources, Boreal Avian Modelling Project, Sustainable Forestry Initiative, Canfor, Domtar, Interfor Corporation, Resolute, Tolko, West Fraser, Central Canada SFI Implementation Committee, Western Canada SFI Implementation Committee, American Bird Conservancy, Bird Studies Canada, Université Laval, Environment and Climate Change Canada, Ontario's Ministry of Natural Resources and Forestry, Canadian Wildlife Service, Saskatchewan Breeding Bird Atlas, Boreal Ecosystems Analysis for Conservation Networks, Canadian Forest Service, Center for Northern Forest Ecosystem Research, Ducks Unlimited Canada, Nature Canada





BRINGING BACK THE FOREST BIRDS: PHASE 2

Showing how sustainable forest management can benefit habitats for bird species at risk in the U.S. Southeast and Pacific Northwest.

Building on a 2014 SFI Grant, ABC will spearhead pilot projects to quantify and improve the value of forests certified to SFI for bird species of conservation interest.

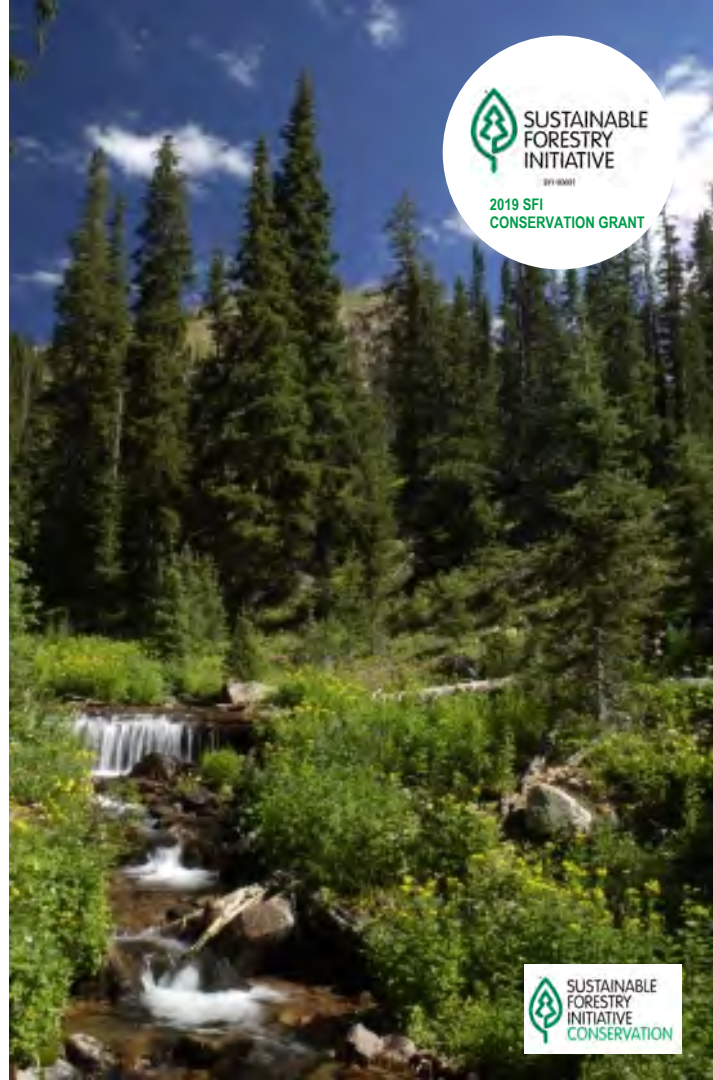
Project Partners: Klamath Bird Observatory, National Council for Air and Stream Improvement, Avian Research and Conservation Institute, East Gulf Coastal Plain Joint Venture; as well as SFI Program Participants Plum Creek Timber Company, Hancock Timber Resource Group, Weyerhaeuser Company, Resource Management Service, LLC, and Enviva.



FORESTS CERTIFIED TO SFI AID IN FIRE RESTORATION, SEQUESTERING CARBON & CONTRIBUTING CLEAN WATER DOWNSTREAM

Exploring the financial value of ecosystem services on lands certified to SFI

Project Partners: Coalitions & Collaboratives, Inc., Sustainable Forestry Initiative, RenewWest, DenverWater, Colorado Springs Utilities, Fruit Growers Supply Company



FORESTS CERTIFIED TO SFI WORK TO CONSERVE CULTURALLY SIGNIFICANT PLANTS, ENHANCING INDIGENOUS VALUES

Studying Culturally Significant Plant Regeneration Post-harvest in Splatsin Territory

Project Partners: Splatsin Indian Band, Sustainable Forestry Initiative, Yucwmenlucwu (Caretakers of the Land) LLP. B.C. Ministry of Forests, Lands, Natural Resource Operations and Rural Development, Ecora Engineering and Resource Group Ltd., Mountain Labyrinths Inc., Sicamous Model Forest, Tolko Industries Ltd.



SFI CONSERVATION AND CARBON PROJECTS

A PRACTICE-BASED APPROACH TO INCREASING FOREST CARBON MITIGATION THROUGH FOREST SOILS

This project will combine science and place-based analysis to fill an important methodological gap in forest carbon mitigation—identifying forest practices that benefit forest soil carbon.



Project Partners: Northern Institute of Applied Climate Science, University of Michigan, **Maryland DNR Forest Service**



LINKING SFI CERTIFICATION AND CLIMATE SMART FORESTRY



MSU's Forest Carbon and Climate Program in partnership with the MI SFI Implementation Committee, has established the direct linkage between SFI Standards and "Climate Smart Forestry." Climate Smart Forestry is practices which mitigate climate change, through carbon sequestration and forest health. Results were used to build a professional e-learning course, with peer review publication underway.

Project Partners: Michigan State University's Forest Carbon and Climate Program, Sustainable Forestry Initiative, Weyerhaeuser, International Paper, Michigan SFI Implementation Committee, Society of American Foresters, and Michigan Forest Biomaterials Institute



WHY CONSERVATION IMPACT?

- Brand owners need to understand the impact of their sourcing
- Program Participants need to justify the cost of certification
- Conservation stakeholders need to better understand the value of certification
- Improved understanding will facilitate continual improvement in SFI

KEY TOPICS IDENTIFIED



CONSERVATION IMPACT SOUNDING BOARD WORKSHOP

APRIL 2019 KEY PARTICIPANTS INCLUDED

THE
CONSERVATION FUND

Canada
Natural Resources Canada
Canadian Forest Service



THE TRUST
FOR
PUBLIC
LAND

The Nature
Conservancy 




AMERICAN FORESTS

 NatureServe®

 **PEPSICO**

IRVING

 Weyerhaeuser

NAFO
National Alliance of Forest Owners

sappi

 Highland

 **WestRock**



TIMBERLAND INVESTMENT RESOURCES

 Hancock
Natural
Resource
Group®

 SUSTAINABLE
FORESTRY
INITIATIVE
CONSERVATION



ROB FARRELL

State Forester

Commonwealth of Virginia



FORESTS OF OPPORTUNITY



SFI-0001



DR. CHAD BOLDING

Associate Professor, Forest
Operations/Engineering

Virginia Tech



**FORESTS OF
OPPORTUNITY**



SFI-0001



HEALY HAMILTON

Chief Scientist

NatureServe

NatureServe

Connecting Science With Conservation



**FORESTS OF
OPPORTUNITY**



SFI-0001



ARA ERICKSON

Director Corporate Sustainability
Weyerhaeuser



Weyerhaeuser



**FORESTS OF
OPPORTUNITY**



SFI-0001



ROB FARRELL

State Forester
Commonwealth of Virginia



DR. CHAD BOLDING

Associate Professor, Forest
Operations/Engineering
Virginia Tech



VIRGINIA TECH.



HEALY HAMILTON

Chief Scientist
NatureServe

NatureServe

Connecting Science With Conservation



ARA ERICKSON

Director Corporate
Sustainability
Weyerhaeuser



Weyerhaeuser

